



# NetChart

---

Automation of  
network monitoring with  
**Machine Learning**

# End To end Network Optimization and Automation

NetChart is the perfect solution for the end to end optimization and troubleshooting of a multi-vendor network.

All the relevant PM, CM and FM data from the RAN, Backhaul and PS/CS Core networks are automatically imported and presented for easy analysis.

NetChart's advanced logical alarm module has been designed to help optimization engineers prioritize and focus their analysis on the real issues affecting the Quality of Services.

The Visual analysis of RAN, TX, Core and Geolocation data on the map interface is key to quickly identify network problems.

The powerful end to end correlation of the Performance, Configuration and Alarm data is perfect for intelligent root cause analysis.

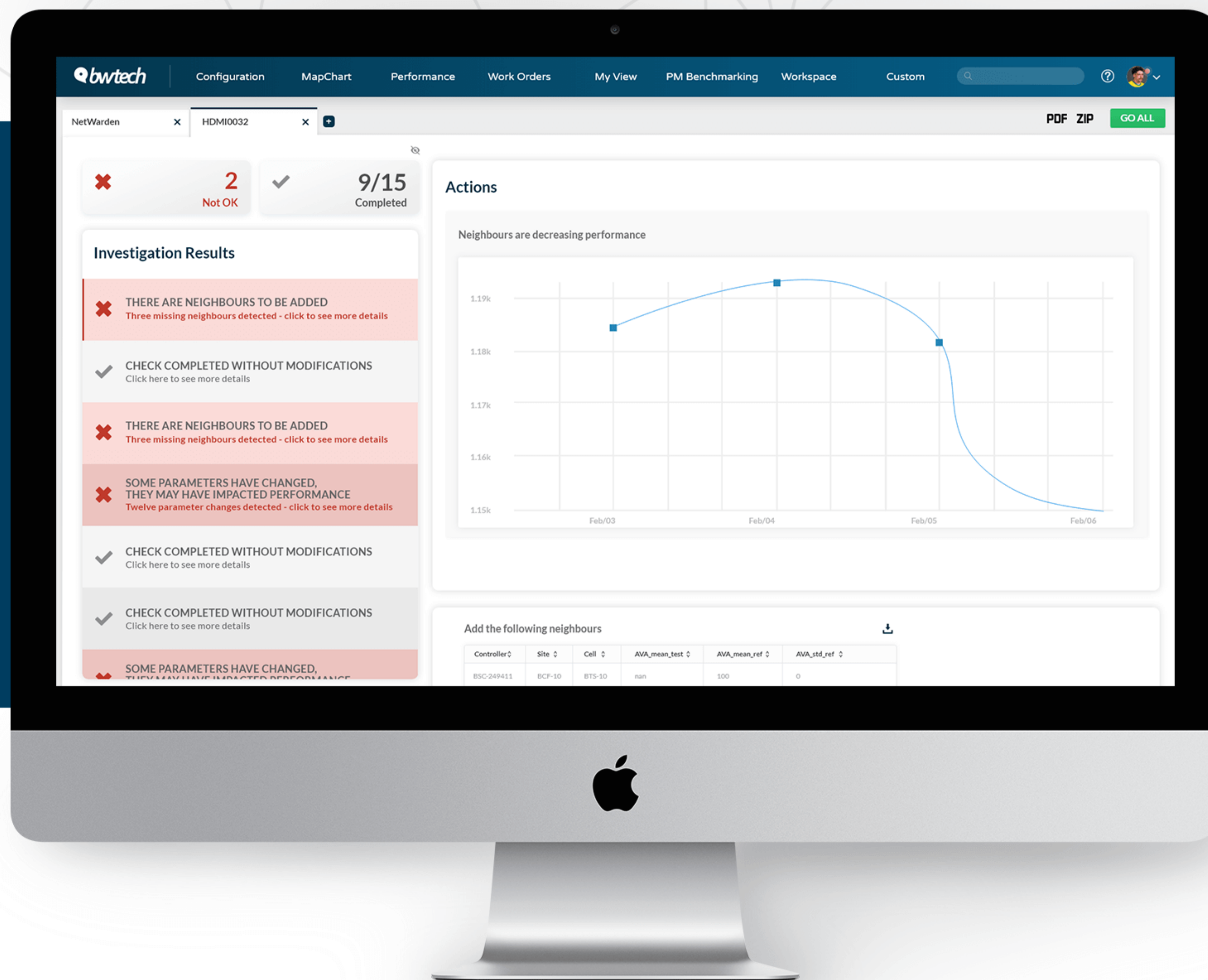
Our embedded Trouble Ticketing tool improves the engineering team's efficiency and effectiveness.

## Awards:



# Netchart

Our platform, NetChart, is a single user interface, cloud-based, multi-vendor and multi-technology, real-time, monitoring and optimization system.



NetChart addresses the challenge of dealing with modern and hugely complex mobile networks that generate vast and diverse volumes of data, providing advanced network analytics and the correlation of various network data sources, such as counters, parameters, inventory, alarms, CDRs and traces.



All data sources can be correlated



Truly End to End



One user interface several modules



Extreme flexibility



The power of Machine Learning

# NetChart Modules



## **NetChart PM**

### End to End Performance Monitoring

NetChart PM provides a wide range of functions required for the fast and efficient monitoring and analysis of network performance and Service Quality Management data, end to end.



## **NetWarden**

### Correlation Using Machine Learning

NetWarden takes advantage of state-of-the-art Machine Learning algorithms to correlate data sources collected by NetChart to automatically provide actionable insights for network optimization.



## **NetChart CM**

### Configuration Management

NetChart CM module allows engineers and managers to take control over the network parameters. Not only can thousands of parameters can be visualised, but their consistency can be checked against flexible user-defined rules.

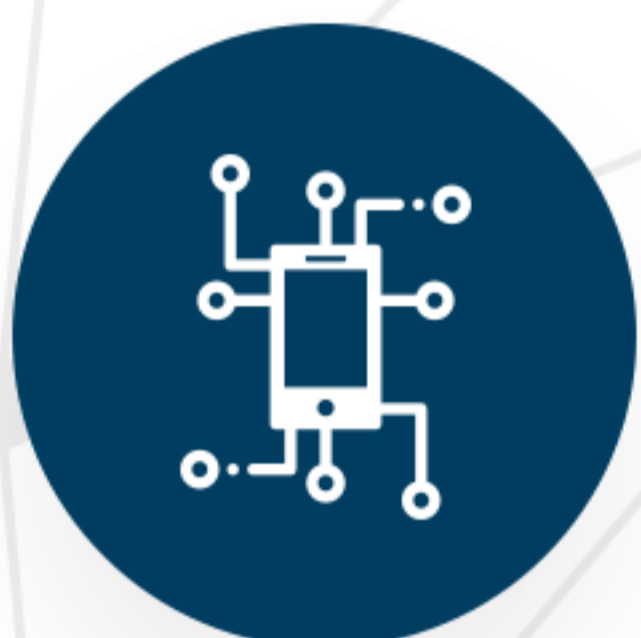
# NetChart Modules



## **NetGeo**

### Geolocation

Utilising trace data, NetGeo implements a proprietary advanced geolocation algorithm that estimates the location and performance information of hundreds of thousands of calls and events.



## **NetCDR**

NetCDR parses and processes in real time billions of multi-vendor CDRs generated by a Mobile Network, providing useful subscribers performance information.



## **NetChart PM Benchmarking**

NetChart PM Benchmarking allows users to easily compare network performance data from multiple vendors, Countries or networks.

# About Us

Bwtech is an innovative provider of end-to-end performance optimization solutions for Fixed and Mobile Operators, Managed Service Providers, Telecom Regulators and MVNE/Os.

More than 20 Communication Providers in 15 different Countries trust Bwtech solutions for mission critical activities, such as real time Network Monitoring, Network Quality reporting, NOC and SOC operations, Capacity Planning and E2E Network Optimization.

Bwtech's team is made of a passionate group of Telecom specialists, software developers and data scientists all driven by the mission to innovate the way network optimization is performed. Innovation, passion, excellence and team spirit: those values guide our team in the daily goal of delighting our global customers.





[www.bwtech.com](http://www.bwtech.com)  
[hello@bwtech.com](mailto:hello@bwtech.com)